

TYPE-11 RUN-N-LITES

R-1100 & R-1150 GS front only

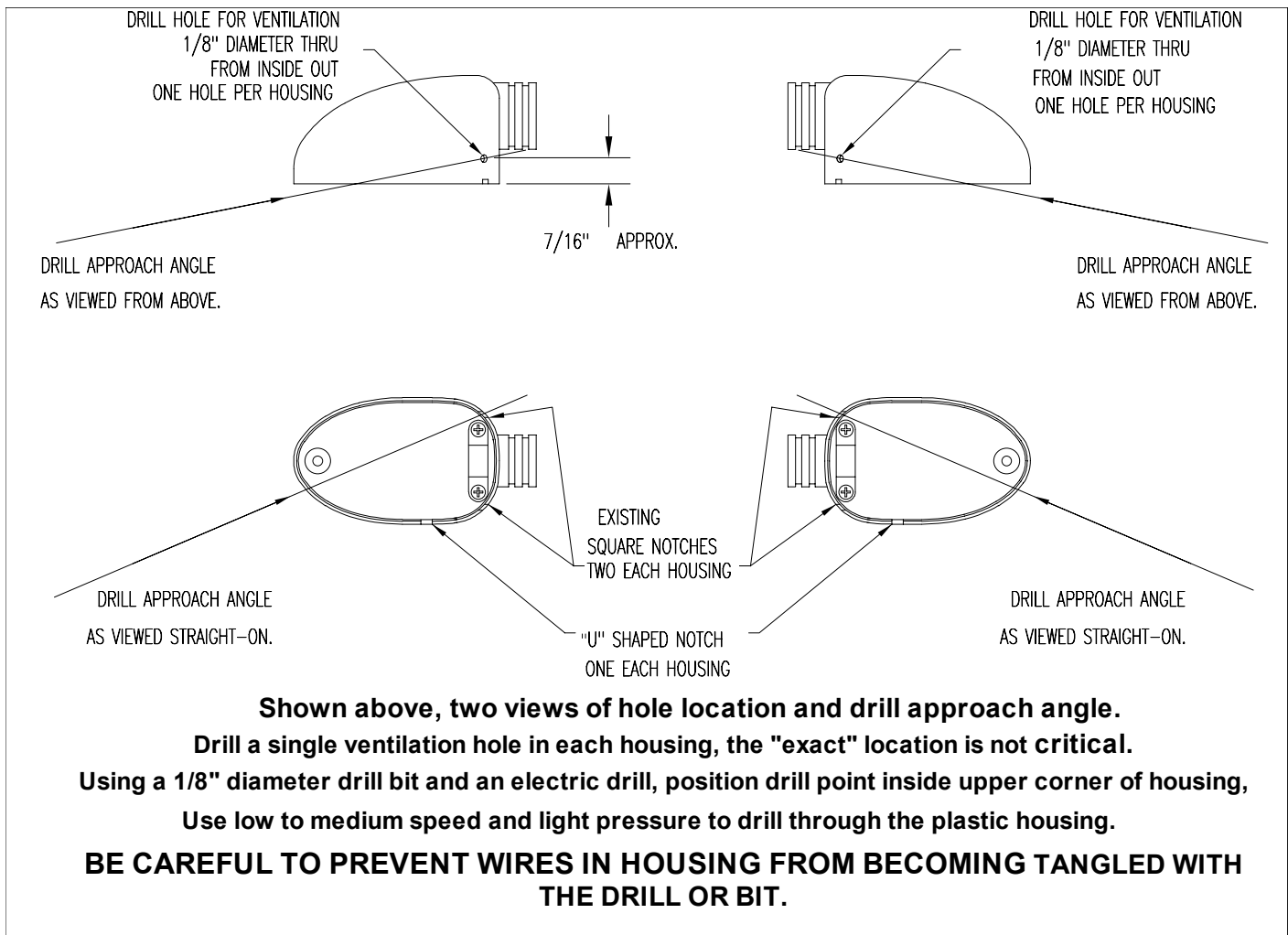
Kit consist of:

*PIGGY-BACK CONNECTOR WITH LEAD	1 piece
*RUN-N-LITES TYPE-11 LIGHT SOCKET w/Heat Shield	1 pair
*WIRE JOINT	1 piece
*BULB, #1157	1 pair
*Cable Ties	6 pieces

ALL INSTALLATIONS

1) Remove the turn signal lenses and the existing turn signal sockets. Unplug the wires and put the sockets away for safekeeping.

2) Drill a ventilation hole in each turn signal housing as shown in the diagram below. This is a precautionary measure and especially useful in "HOT" climates. It will help to create a draft and to ventilate the hot air inside the turn signal housing.



R-1100 GS only : This installation has a high difficulty level and will require a LOT of patience.

1) Remove the turn signal housings from their mounting stems. Push a small diameter mechanic's wire down the mounting stems, along side the existing wires. (coat hanger wire will NOT work)

This is a very difficult operation, as there is a 90-degree bend at the inboard end of the stems. Bending the leading end of the mechanic's wire slightly will aid in getting the mechanic's wire to bend as it hits this 90-degree corner.

Once the mechanic's wire has curled around the bend, use long needle nose pliers to grab it and pull it through, being careful not to damage the other.

T11_INST.DOC 2/02 3 pages

2) Reinstall the turn signal housings to the stems.

- 3) Connect the ground wire (brown) to the tab on the back of the RUN-N-LITES TYPE-11 light socket reflector.
- 4) Connect the turn signal power wire (blue with strip) to the SHORT lead of the TYPE-11 light socket. Tape this connection with electrical tape.
- 5) Bend a hook in the end of the LONG lead of the TYPE-11 light socket and the end of the mechanic's wire. Engage these two hooks and crimp them shut, tight with pliers.
- 6) Gently, pull the LONG lead through the mounting stem with the mechanic's wire. With a little luck the wires will stay crimped together as they negotiate the 90 degree bend.
- 7) Remove the headlamp from the housing, to gain access to the Parking Lamp. The Parking Lamp is the small bulb (two wires) located just below the main head light bulb (three wires).
- 8) Route the LONG leads of the TYPE-11 light sockets along side the existing wiring, to the back of the head light housing, passing them through the grommet in the rear of the housing.
- 9) Bring the LONG leads and the PIGGY-BACK LEAD together inside the head light housing and crimp the ends together with the WIRE JOINT.
- 10) Disconnect the power lead (Gray with black strip) from the Parking Lamp. Connect the PIGGY-BACK CONNECTOR to this lug; connect the power lead to the PIGGY-BACK CONNECTOR.
- 11) Reinstall the turn signal lenses, being careful not to damage the heat shields as the lens and TYPE-11 socket are slide into place. Align the lens mounting screw boss with the hole in the reflector as the assembly is closed down onto the housing. Put a small amount of grease on the lens screw before insertion.
- 12) Reinstall head light into it's housing.

R-1150 GS only :

- 1) Push the long cable lead of each RUN-N-LITES assembly through the mounting stem of the turn signal.
- 2) Connect the ground wire (brown) to the tab on the back of the RUN-N-LITES reflector.
- 3) Connect the turn signal power wire (blue with stripe) to the SHORT lead of the RUN-N-LITES assembly. Tape the connection with electrical tape.
- 4) Remove the headlamp from the housing, to gain access to the Parking Lamp. The Parking Lamp is the small bulb located just below the main bulb in the left portion of the dual headlight, if you look at it from the front.
- 5) Route the long leads which you pushed through the turn signal stems, along the existing turn signal wires and tie them together with the cable ties provided in the kit.
- 6) Bring the long leads and the Piggy Back Lead together behind the parking light housing and crimp the ends together with the wire joint provided. If the long leads are too long, they may be shortened at this point.
- 7) Disconnect the power lead (Gray with black stripe) from the Parking Lamp. Connect the PIGGY-BACK CONNECTOR to this lug, connect the power lead to the PIGGY-BACK CONNECTOR. Tape the connection with electrical tape.
- 8) Reinstall the turn signal lenses, being careful not to damage the heat shields as the lens and TYPE-11 socket are slide into place. Align the lens mounting screw boss with the hole in the reflector as the assembly is closed down onto the housing. Put a small amount of grease on the lens screw before insertion.
- 9) Reinstall head light into it's housing.

TEST TURN SIGNALS AND ALL LIGHTS FOR CORRECT OPERATION

*If turn signal operation is "odd", check that the ground wire and turn signal power leads are not reversed on one or both RUN-N-LITES TYPE-10 sockets. *

"NOTES"

Remove turn signal lenses only when the lenses are cool to the touch.
Remove screw, open lens slightly, use screwdriver blade to gently lift socket assembly up and out, allowing lens hold down tab to disengage from the turn signal housing.
Be careful not to damage the heat shields.
Heat shields are made of aluminum foil and fiberglass cloth.

BE SAFE...BE SEEN!!

**

RUN-N-LITES **PO Box 40** **Tennent, NJ 07763-0040** **Tel. / Fax 732 - 786 - 9777**
Web: www.RUN-N-LITES.com run-n-lites@monmouth.com
Thank you for your business **Klaus Huenecke** T11_INST.DOC 2/02 3 pages