

TYPE-16 RUN-N-LITES

R-1100 S rear only

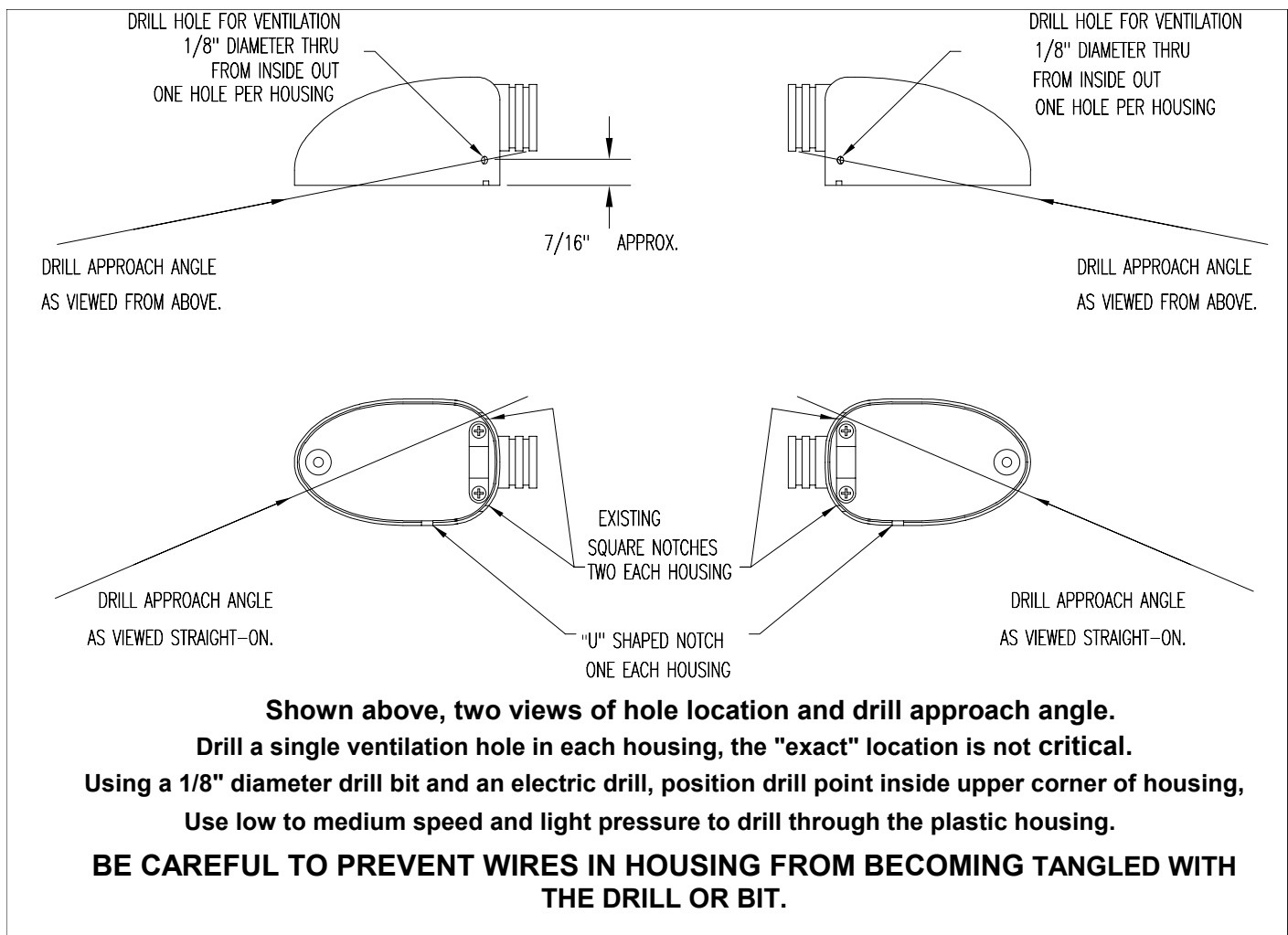
Kit consist of:

- *RUN-N-LITES TYPE-16 LIGHT SOCKET w/Heat Shield
- *PIGGYBACK CONNECTOR
- *BULB, #1157

- 1 pair
- 1 piece
- 1 pair

INSTALLATION INSTRUCTIONS

- 1) Remove seat and both side covers from the tail section. There are two screws and two pins in rubber grommets holding the side covers. Use the 3mm Allen wrench from your tool kit. Put components aside for safekeeping.
- 2) Remove the turn signal lenses and the existing turn signal sockets. Unplug the wires and put the sockets away for safekeeping.
- 3) Drill a ventilation hole in each turn signal housing as shown in the diagram below.



4) Connect the ground wire (brown) to the tab on the back of the RUN-N-LITES TYPE-16 light socket reflector.

5) Connect the turn signal power wire (blue or green with strip) to the SHORT lead of the TYPE-16 light socket. **Tape this connection with electrical tape.**

- 6) Remove the four screws that hold the tail light assembly trim panel to the tail section. Use your 3mm Allen wrench, let assembly hang "gently" by wires.
- 7) One at a time, remove the turn signal housings from the their mounting. Use a Phillips screwdriver and note the "hidden" hook in the base of the stem.
- 8) Route the LONG leads of the TYPE-16 light sockets through the turn signal housing mounting stems and out thru the upper notch adjacent to the mounting screw hole.
- 9) Re-mount the turn signal housing to tail section being careful not to pinch any wires.
- 10) Tuck the wire from the TYPE-16 light sockets into the crevice at the rear edge of tail assembly adjacent to the turn signal mounting point. Continue to route the leads up toward the tail light assembly.
- 11) Bring the LONG leads of the TYPE-16 light sockets together at the taillight assembly, crimp the PIGGY-BACK CONNECTOR in place.
- 12) Disconnect the power lead (Gray with black strip) from the Tail Lamp. Connect the PIGGY-BACK CONNECTOR to this lug; connect the power lead to the back of the PIGGY-BACK CONNECTOR.
- 13) Orient the TYPE-10 sockets in the turn signal housings so that the bulb base is pointed AWAY from the mounting stem, opposite to the original bulbs orientation in the housings. (Yes, it looks backwards)
- 14) Reinstall the turn signal lenses as you slide the TYPE-10 sockets into their final position. Be careful not to damage the heat shields.
- 15) Align the lens mounting screw boss with the hole in the reflector as the assembly is closed down onto the housing. Put a small amount of grease on the lens screw before insertion. This is a tight fit, be patient and be careful.
- 17) Test system then, reinstall the tail light assembly (4 screws) to the tail section, side panels (2 screws + two pins in grommets) and seat.

TEST TURN SIGNALS AND ALL LIGHTS FOR CORRECT OPERATION

*If turn signal operation is "odd", check that the ground wire and turn signal power leads are not reversed on one or both RUN-N-LITES TYPE-16 sockets. *

"NOTES"

Remove turn signal lenses only when the lenses are cool to the touch.

Remove screw, open lens slightly, use screwdriver blade to gently lift socket assembly up and out, allowing lens hold down tab to disengage from the turn signal housing.

Be careful not to damage the heat shields. Heat shields are made of aluminum foil and fiberglass cloth.

BE SAFE...BE SEEN!!

**

RUN-N-LITES

PO Box 40

Tennent, NJ 07763-0040

Tel. / Fax 732 - 786 - 9777

Web: www.RUN-N-LITES.com

run-n-lites@monmouth.com

Thank you for your business

Klaus Huenecke

T16_INST.DOC 2-02 2 pages